

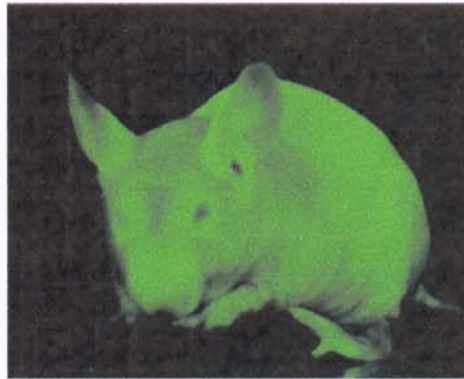
# GFP-Expressing Nude Mouse

## Enables in vivo color-coded imaging of tumor-host interaction

### C57BL/6 BALB/c nu/nu GFP



Under natural light



Under blue light

Provided by AntiCancer, Inc.

#### Origin

AntiCancer, Inc. (USA)

URL: <http://www.anticancer.com>

GFP-nude mouse is produced by Japan SLC Inc. under the license from AntiCancer Inc.

#### Characteristics

Human cancer cell lines grow extensively in the transgenic GFP nude mouse, including cell lines that express red fluorescent protein (RFP). Dual-color fluorescence-imaging enables visualization of human tumor-host interaction by whole-body imaging non-invasively and at the cellular level as well as by intravital imaging and in fresh and frozen excised tissue.

#### Option

GFP- or RFP-labeled tumor cells are also available.

For Pricing and Delivery, contact:

AntiCancer Japan Incorporated

E-mail: [anticancerjapan@cup.ocn.ne.jp](mailto:anticancerjapan@cup.ocn.ne.jp)

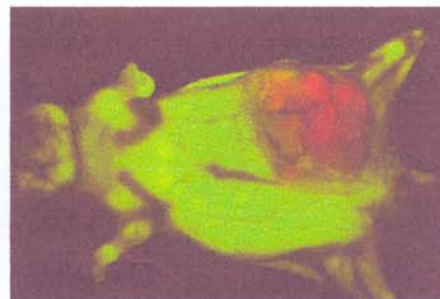
Phone : 072-643-1048

Address: Saito-Bio Incubator 106

7-15, Asagi 7-Chome, Ibaraki, Osaka 567-0085

#### Example

GFP-nude mouse implanted with RFP-labeled human colon cancer (HCT-116-RFP). Red area shows cancer tissue, and green area shows normal tissue of GFP-nude mouse.



#### References

- Yang, M., Li, L., Jiang, P., Moossa, A.R., Penman, S., and Hoffman, R.M. Dual-color fluorescence imaging distinguishes tumor cells from induced host angiogenic vessels and stromal cells. *Proc. Natl. Acad. Sci. USA* **100**, 14259-14262, 2003.
- Yang, M., Reynoso, J., Jiang, P., Li, L., Moossa, A.R., and Hoffman, R.M. Transgenic nude mouse with ubiquitous green fluorescent protein expression as a host for human tumors. *Cancer Research* **64**, 8651-8656, 2004.
- Yang, M., Jiang, P., and Hoffman, R.M. Whole-body subcellular multicolor imaging of tumor-host interaction and drug response in real time. *Cancer Research* **67**, 5195-5199, 2007.